

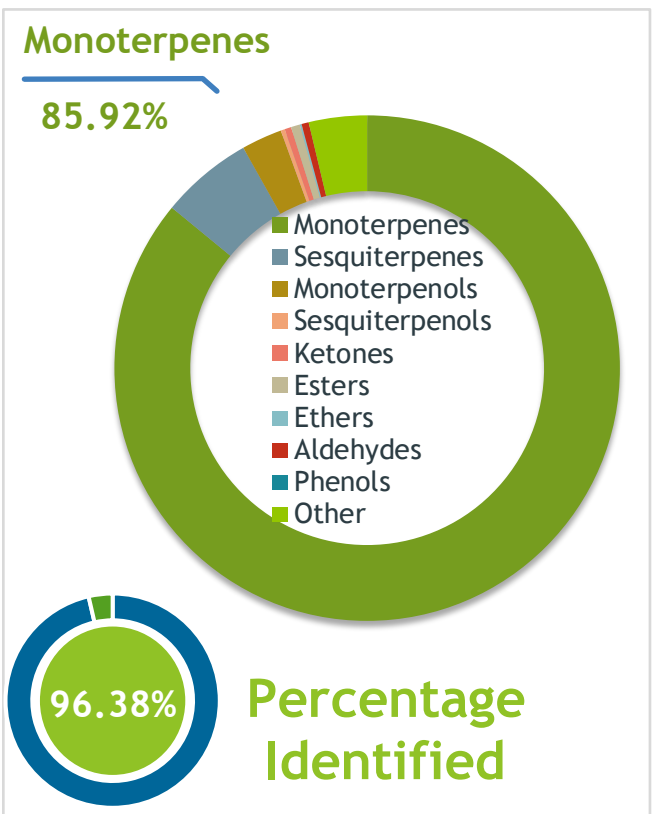
Client SACRASOUL **Source** 

Frankincense (Boswellia Omani)
241027L1 - Oman

Sample Frankincense (Boswellia Omani)
Identification #: 241027L1
Type:..... Essential Oil
CAS Number:... 0
Sacrasoul

Properties Country Of Origin | Oman
Specific Gravity | NT
Refractive Index | NT

Primary **54.35%** | **alpha-Pinene**
7.25% | **delta-3-Carene**
4.64% | **Limonene**



Result **APPROVED**
11/11/2024

Conclusion No adulterants, diluents, or contaminants were detected via this method. This oil meets the expected profile for genuine Essential Oil of Frankincense (Boswellia Omani)
Internal Number: | EVS-6406



Essential Validation Services
747 SW 2nd Ave IMB 12 Suite 306
Gainesville, FL 32601
317.361.5044 |
<https://essentialvalidationservices.com/>
Alan Christen

Monoterpenes	85.92%	85.92
Sesquiterpenes	5.90%	5.90%
Monoterpenols	2.60%	2.60%
Sesquiterpenols	0.26%	0.26%
Ketones	0.42%	0.42%
Esters	0.57%	0.57%
Ethers	0.12%	0.12%
Aldehydes	0.46%	0.46%
Phenols	0.00%	0.00%
Other	3.72%	3.72%

ESSENTIAL VALIDATION SERVICES | 240 GOOSE HOLLOW ROAD BERTHOUD, CO 80513 | 317-361-5044

Client

SACRASOUL

Source

Frankincense (*Boswellia Omani*)

241027L1

Total Percentage		96.38%		
Number	RT	Area %	Compound Name	Chemical Family
1	6.36	0.02%	Santene	Normonoterpene
2	7.69	0.23%	Hashishene	Monoterpene
3	7.77	0.15%	Tricyclene	Monoterpene
4	7.96	0.32%	alpha-Thujene	Monoterpene
5	8.40	54.35%	alpha-Pinene	Monoterpene
6	8.82	3.61%	Camphene	Monoterpene
7	8.97	0.45%	Thuja-2,4(10)-diene	Monoterpene
8	9.74	1.14%	Sabinene	Monoterpene
9	9.91	3.18%	beta-Pinene	Monoterpene
10	10.28	0.04%	6-Methyl-5-hepten-2-one	Aliphatic Ketone
11	10.48	1.65%	Myrcene	Monoterpene
12	10.66	0.08%	6-Methyl-5-hepten-2-ol	Aliphatic Alcohol
13	10.82	0.05%	2-Carene	Monoterpene
14	11.01	0.05%	Pseudolimonene	Monoterpene
15	11.14	4.14%	alpha-Phellandrene	Monoterpene
16	11.26	7.25%	delta-3-Carene	Monoterpene
17	11.59	0.11%	alpha-Terpinene	Monoterpene
18	11.93	1.85%	para-Cymene	Monoterpene
19	12.15	4.64%	Limonene	Monoterpene
20	12.50	1.13%	(Z)-beta-Ocimene	Monoterpene
21	12.96	0.82%	(E)-beta-Ocimene	Monoterpene
22	13.43	0.11%	gamma-Terpinene	Monoterpene
23	14.48	0.03%	Isoterpinolene	Monoterpene
24	14.64	0.42%	Terpinolene	Monoterpene
25	15.27	0.01%	Perillene	Monoterpene Ether
26	15.39	0.11%	Linalool	Monoterpenol
27	15.50	0.02%	6-Methyl-3,5-heptadien-2-one	Monoterpene Ketone
28	15.69	0.04%	alpha-Pinene oxide	Monoterpene Ether
29	16.33	0.03%	Octan-3-yl acetate	Aliphatic Ester
30	16.51	0.38%	alpha-Campholene aldehyde	Monoterpene Aldehyde
31	16.67	0.22%	Alloocimene	Monoterpene
32	16.78	0.03%	cis-Limonene oxide	Monoterpene Ether
33	16.99	0.01%	trans-Limonene oxide	Monoterpene Ether
34	17.13	0.43%	trans-Pinocarveol	Monoterpenol
35	17.41	0.74%	trans-Verbenol	Monoterpenol

ESSENTIAL VALIDATION SERVICES | 240 GOOSE HOLLOW ROAD BERTHOUD, CO 80513 | 317-361-5044

Client

SACRASOUL

Source



Frankincense (*Boswellia Omani*)
241027L1

Number	RT	Area %	Compound Name	Chemical Family
36	17.758	0.01%	Camphene hydrate	Monoterpenol
37	18.01	0.04%	Pinocamphone	Monoterpene Ketone
38	18.10	0.09%	Pinocarvone	Monoterpene Ketone
39	18.62	0.48%	para-Mentha-1,5-dien-8-ol	Monoterpenol
40	18.99	0.11%	Terpinen-4-ol	Monoterpenol
41	19.36	0.06%	para-Cymen-8-ol	Monoterpenol
42	19.61	0.08%	Myrtenal	Monoterpene Aldehyde
43	19.70	0.58%	alpha-Terpineol	Monoterpenol
44	20.15	0.22%	Verbenone	Monoterpene Ketone
45	20.82	0.07%	trans-Carveol	Monoterpenol
46	21.85	0.01%	Carvone	Monoterpene Ketone
47	22.10	0.01%	cis-Carveol	Monoterpenol
48	22.22	0.02%	Linalyl acetate	Monoterpene Ester
49	23.65	0.52%	Bornyl acetate	Monoterpene Ester
50	26.40	0.16%	delta-Elemene	Sesquiterpene
51	27.23	0.08%	Isoledene	Sesquiterpene
52	27.58	0.32%	alpha-Copaene	Sesquiterpene
53	27.90	1.14%	beta-Bourbonene	Sesquiterpene
54	28.21	1.02%	beta-Elemene	Sesquiterpene
55	28.78	0.01%	cis-Caryophyllene	Sesquiterpene
56	28.88	0.05%	alpha-Gurjunene	Sesquiterpene
57	29.37	0.56%	Isocaryophyllene	Sesquiterpene
58	29.82	0.15%	beta-Copaene	Sesquiterpene
59	30.08	0.01%	alpha-Guaiene	Sesquiterpene
60	30.84	0.18%	alpha-Humulene	Sesquiterpene
61	31.02	0.06%	9-epi-(E)-Caryophyllene	Sesquiterpene
62	31.13	0.01%	cis-Muurolo-3,5-diene	Sesquiterpene
63	31.36	0.03%	Dauca-5,8-diene	Sesquiterpene
64	31.62	0.05%	gamma-Selinene	Sesquiterpene
65	31.71	0.19%	gamma-Muurolole	Sesquiterpene
66	31.91	0.56%	Germacrene D	Sesquiterpene
67	32.21	0.53%	beta-Selinene	Sesquiterpene
68	32.32	0.02%	1-epi-Bicyclosesquiphellandrene	Monoterpene
69	32.41	0.02%	gamma-Amorphene	Sesquiterpene
70	32.52	0.33%	alpha-Selinene	Sesquiterpene

